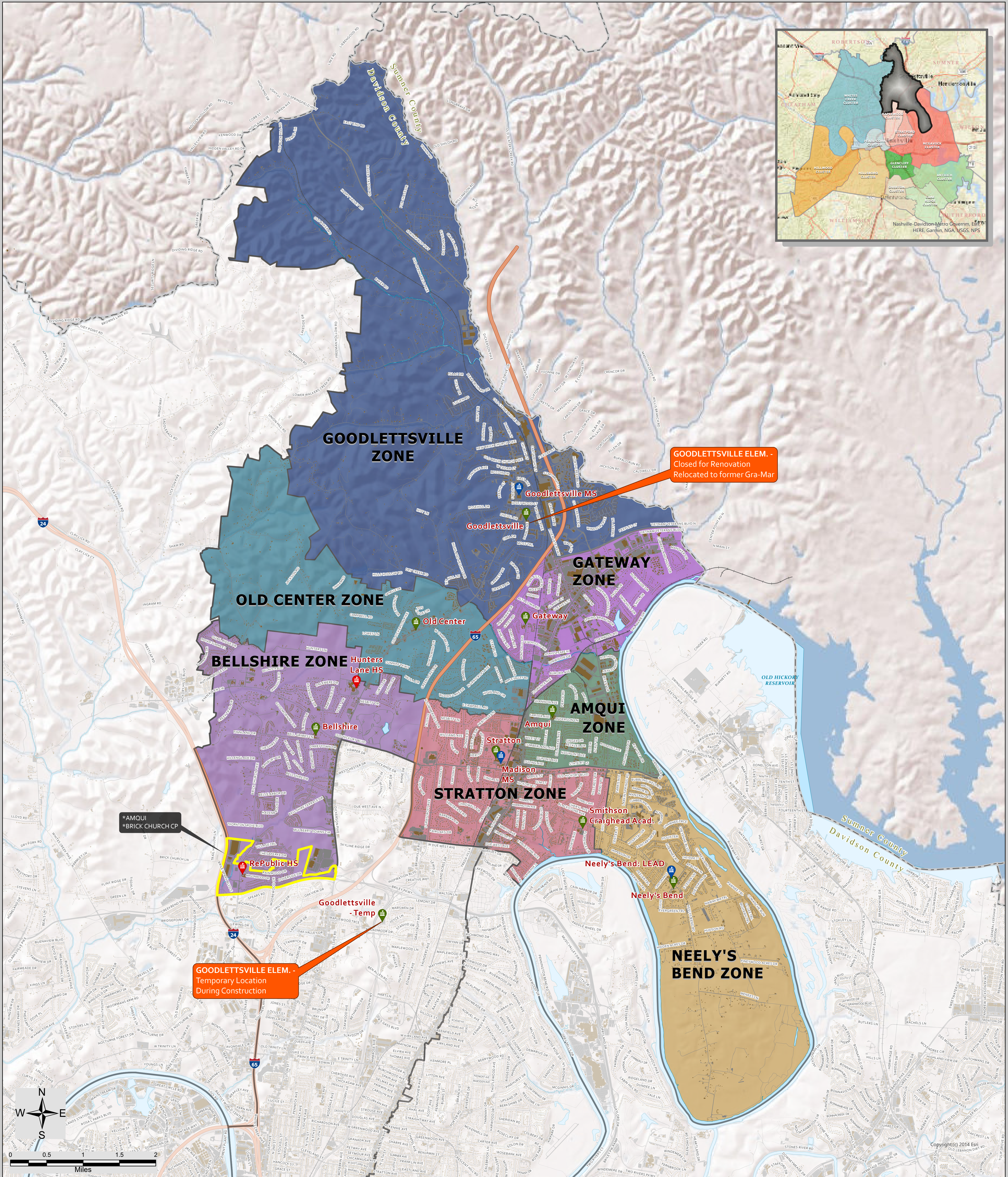
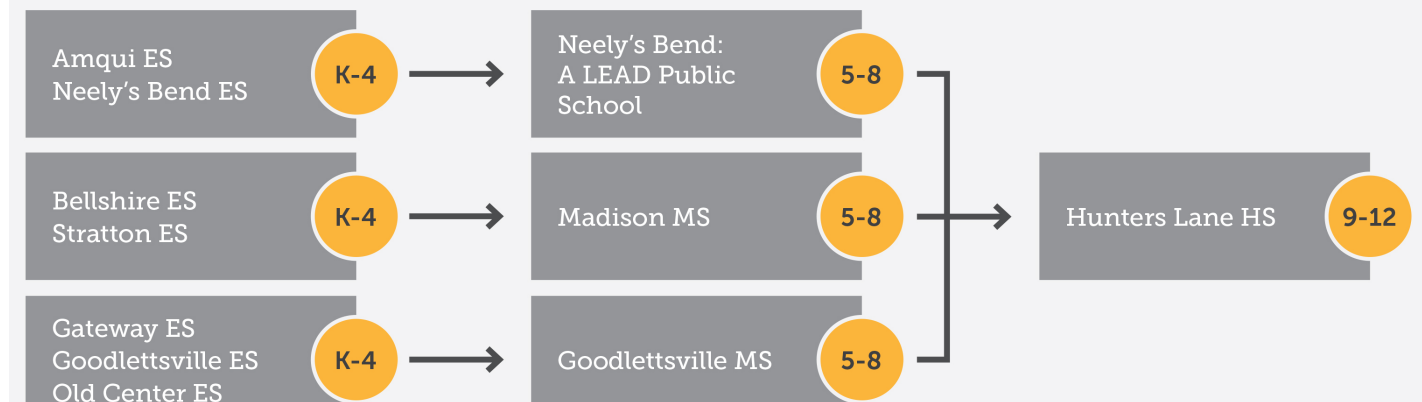


HUNTERS LANE CLUSTER

2021-22



HUNTERS LANE CLUSTER



CHARTER SCHOOLS
RePublic HS
Smithson Craighead Academy

- Zoned Option
- County Boundary
- SCHOOLS by TIER**
- Elementary School
- Middle School
- High School



This map shows the general geographic area zoned to each school. Actual zoning is based on specific street addresses and cannot always be determined visually, especially around the border of a zone. To find the exact school zone and options available to a specific address, please visit our [SCHOOL ZONE FINDER](https://zonefinder.mnps.org/zonefinder/) website at <https://zonefinder.mnps.org/zonefinder/> or call Customer Service 615-259-4636. Also see our map site for greater Zone detail at: <https://mnps.maps.arcgis.com>

This map was produced by -
MNPS Student Assignment