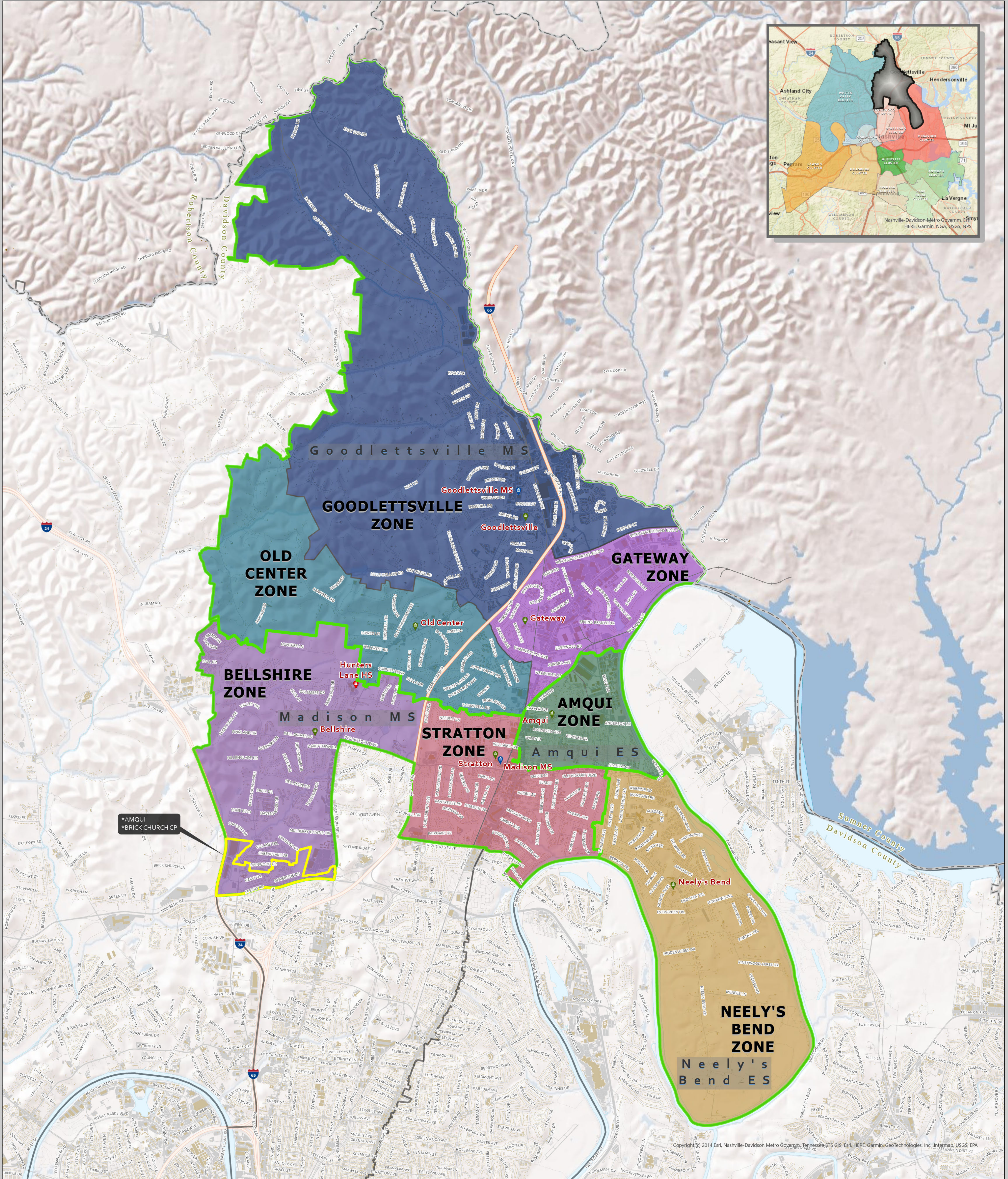
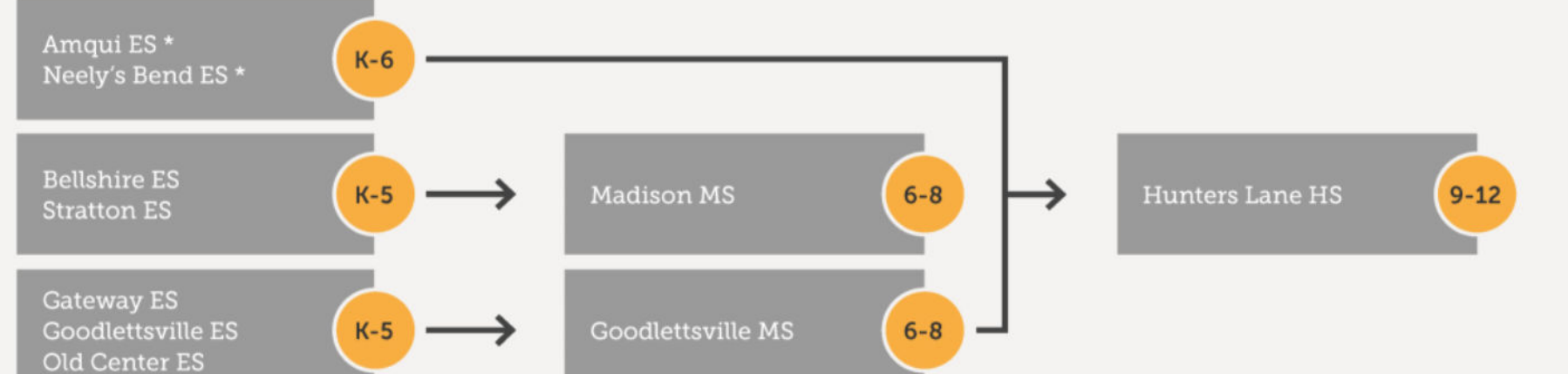


# HUNTERS LANE CLUSTER

2023-24



## HUNTERS LANE CLUSTER



**CHARTER SCHOOLS**  
RePublic HS  
Smithson Craighead Academy

\* Beginning in the 2023-24 school year, Amqui ES and Neely's Bend ES will retain a grade each year, culminating in a K-8 configuration by the 2025-26 school year.

- SCHOOLS by TIER**
- Elementary School
  - Middle School
  - High School
  - Zoned Option
  - Middle School Zone



This map shows the general geographic area zoned to each school. Actual zoning is based on specific street addresses and cannot always be determined visually, especially around the border of a zone. To find the exact school zone and options available to a specific address, please visit our SCHOOL ZONE FINDER website at <https://zonefinder.mnps.org/zonefinder/> or call Customer Service 615-259-4636. Also see our map site for greater Zone detail at: <https://mnps.maps.arcgis.com>

This map was produced by -  
MNPS Boundary Planning